



Fire Safety For Places of Worship

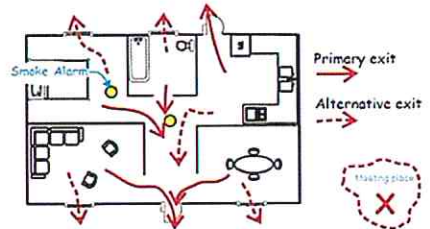
No. 1: Install and Maintain Smoke Alarms



A study found smoke alarms were not present in 65% of church fires. Smoke Alarms give you an early warning, increasing your chance of escaping a fire. Install smoke alarms on each level. **Test smoke alarms once a month.** Make sure to follow the manufacturer's recommendation on battery replacement.

No. 2: Plan and Practice Escape

Make sure you have an emergency plan in place and practice annually.



Plan **two ways out** of every room. Also, select a safe meeting place outside away from the burning building where you can account for members. **Once you get out stay out! Never go back into a burning building.**

No. 3: Exit Lights

Exits and directional signs should be illuminated and tested monthly. Functioning exit and emergency lighting aid in providing direction and illumination of the path of egress.



No. 4: Heating Units

Combustibles should never be stored in a heating or electrical room. Have your heating unit inspected by a licensed and insured contractor at least annually.



No. 5: Electrical

Electrical fires are often traced to old wiring, overloaded circuits, misused extension cords, and faulty electrical appliances.

- **Turn -off** Electrical appliances left on for long periods of time can malfunction or overheat. Turn appliances off or unplug them when not in use.
- Maintain a **3 foot clearance** around circuit breakers, transformers, and electrical panels.
- **Check the load** If your power goes out often, outlets spark, the lights in your home flicker, or make noise, hire a **certified** electrician.

No. 6 Candles

Candles should never be left unattended. Keep in mind **candles are open flames!**

SFD recommends the following:

- Use candle holders that are sturdy and won't tip over easy.
- Never use around oxygen cylinders.
- Use flashlights for power outage.
- Never burn candles near anything that might catch fire.



Please Post On Your Bulletin Board

A public service announcement from the Shreveport Fire Department.

