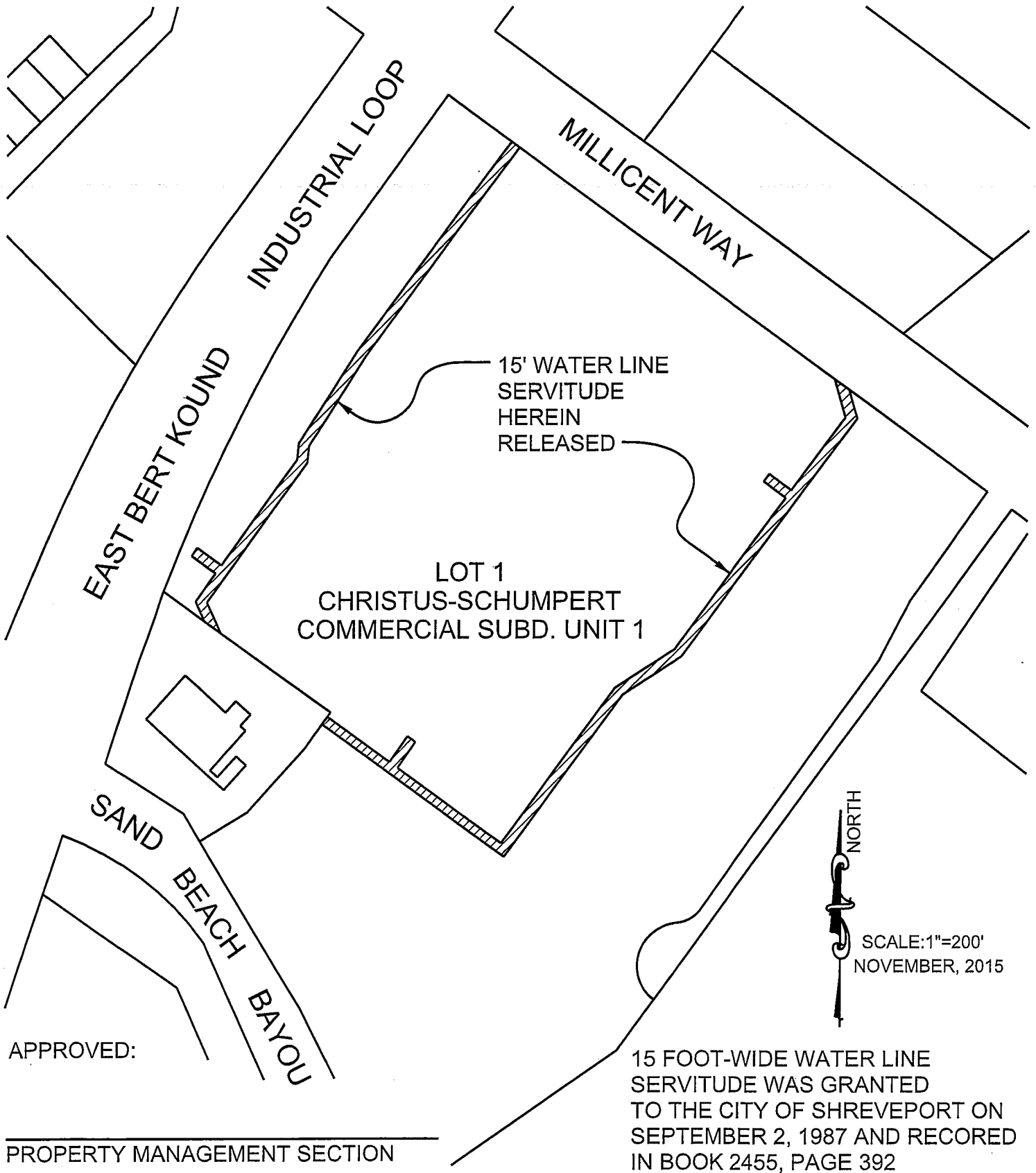


PLAT SHOWING RELEASE OF THE GRANTED
15 FOOT-WIDE WATER LINE SERVITUDE IN
LOT 1 CHRISTUS-SCHUMPERT COMMERCIAL SUBDIVISION UNIT 1,
CITY OF SHREVEPORT,
SECTION 32 (T17N-R13W), CADDO PARISH, LOUISIANA.



APPROVED:

PROPERTY MANAGEMENT SECTION

15 FOOT-WIDE WATER LINE
SERVITUDE WAS GRANTED
TO THE CITY OF SHREVEPORT ON
SEPTEMBER 2, 1987 AND RECORDED
IN BOOK 2455, PAGE 392