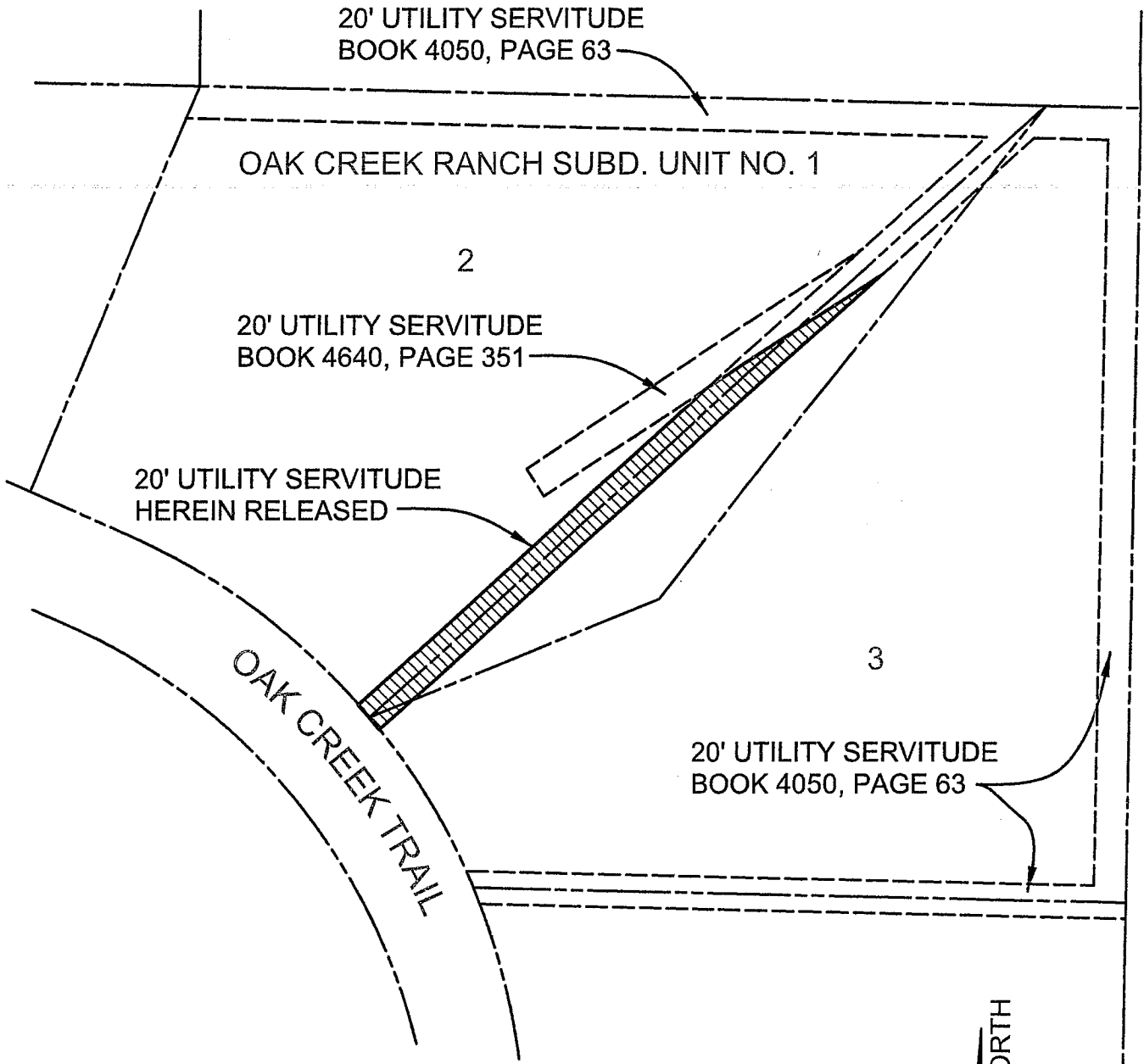


PLAT SHOWING THE RELEASE OF A DEDICATED
20 FOOT UTILITY SERVITUDE
LOCATED IN LOTS 2 AND 3, OAK CREEK RANCH SUBDIVISION
UNIT NO. 1, CITY OF SHREVEPORT,
SECTION 5 (T16N-R15W), CADDO PARISH, LOUISIANA.



APPROVED:

PROPERTY MANAGEMENT SECTION

20' UTILITY SERVITUDE
DEDICATED IN
OAK CREEK RANCH
SUBDIVISION UNIT NO. 1
RECORDED JUNE 14, 2004
IN BOOK 4050 PAGE 63



SCALE: 1"=100'
DECEMBER, 2015